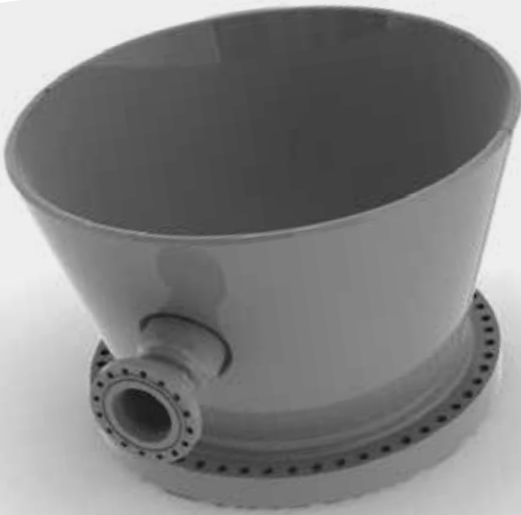




Transition Spools

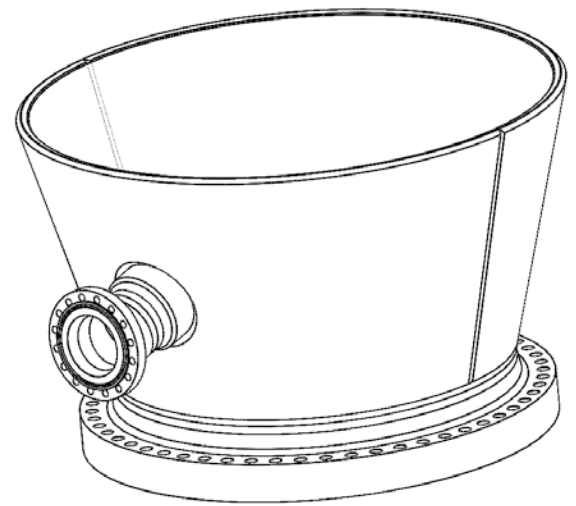
Single Flange
Weld-in Design



Transition Spool

Technical Specifications

The DeltaValve® Transition Spool is designed to create a permanent connection between the DeltaGuard® unheading device and the coke-drum bottom flange. Transition spools are available with single-flanged weld-in configurations, and incorporate a permanent side inlet feed connection.



Construction

ASME Section VIII Div. I

Weight:

5,800 lbs. +/-

Metallurgy

Body: SA387 Grade I I, Class 2

Dimensions:

Engineered to plant specifications

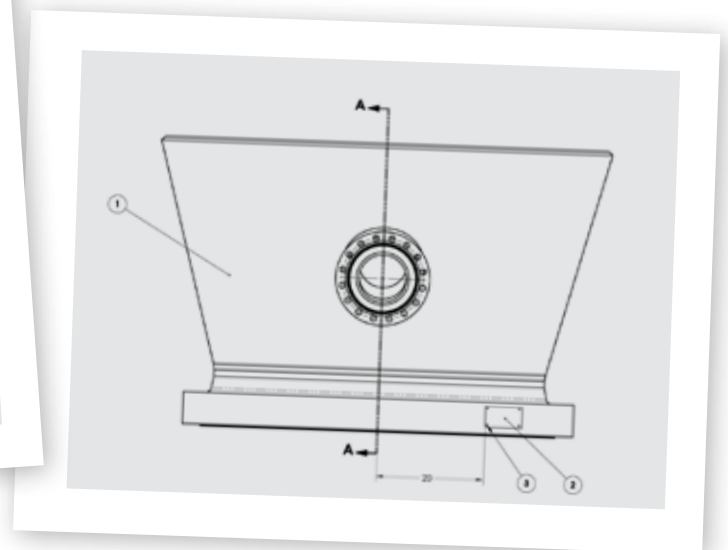
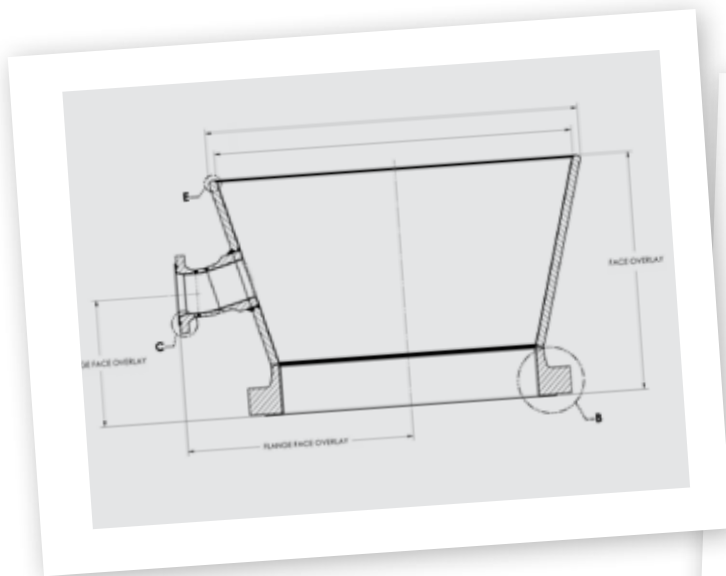
Flange: SA182 F11, Class 2

Connections:

Engineered to plant specifications

Cladding: 410 stainless steel

Overlay: ERNiCr-3



Corporate Office

9890 Jordan Gateway, Sandy, Utah 84070 Phone: 801-984-1000

Assembly and Testing

16315 Market Street, Channelview, Texas 77530 Phone: 281-247-8100

www.deltavalve.com deltavalve.sales@curtisswright.com

